

FEATURES

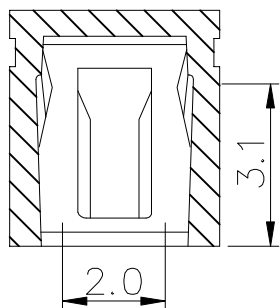
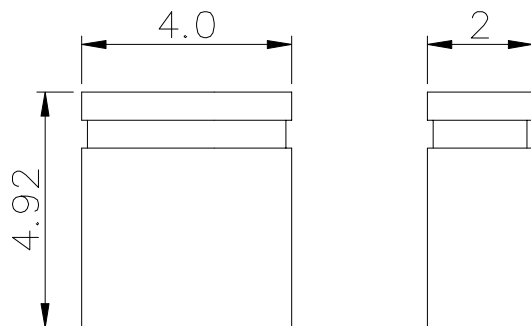
Double tuning fork type contact guarantees high reliability.
2.0MM pitch Low-Profile mini type Match to 0.50mm sq. posts.

MATERIAL

- Insulator: 30% Glass Filled P.B.T. (UL 94V-0)
- Contact: Gold Plated.
- Terminal: 5191 Phosphor Bronze.

SPECIFICATIONS

- Current Rating: 3 amperes MAX.
- Contact Resistance: 30mΩ MAX.
- Insulation Resistance: 1000 Megohms min.
- Dielectric Withstanding Voltage: AC 650 volts RMS at sea leve.
- TEMPERATURE RANGE: -20°C TO 105°C



CONTACT
POINT

PART NO.	COLOR
CMJ-20AB	BLACK
CMJ-20AR	RED
CMJ-20ABL	BLUE
CMJ-20AY	YELLOW

