

1

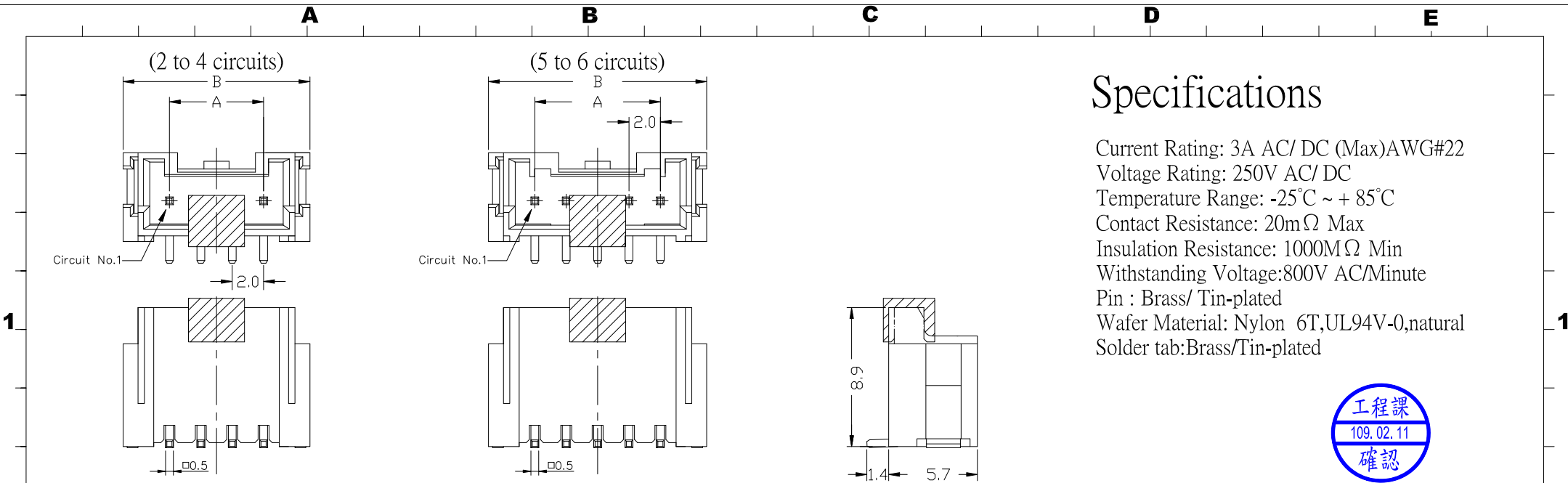
2

3

1

2

3



# Specifications

Current Rating: 3A AC/ DC (Max)AWG#22  
 Voltage Rating: 250V AC/ DC  
 Temperature Range: -25°C ~ + 85°C  
 Contact Resistance: 20mΩ Max  
 Insulation Resistance: 1000MΩ Min  
 Withstanding Voltage:800V AC/Minute  
 Pin : Brass/ Tin-plated  
 Wafer Material: Nylon 6T,UL94V-0,natural  
 Solder tab:Brass/Tin-plated



Poles	Dimension mm (in.)		Part No.	Note.
	A	B		
02	2.0(0.079)	8.0(0.315)	CPA-W20-02-SMTRC	
03	4.0(0.157)	10.0(0.394)	CPA-W20-03-SMTRC	
04	6.0(0.236)	12.0(0.472)	CPA-W20-04-SMTRC	
05	8.0(0.315)	14.0(0.551)	CPA-W20-05-SMTRC	
06	10.0(0.394)	16.0(0.630)	CPA-W20-06-SMTRC	
07	12.0(0.472)	18.0(0.709)	CPA-W20-07-SMTRC	
08	14.0(0.551)	20.0(0.787)	CPA-W20-08-SMTRC	
09	16.0(0.630)	22.0(0.866)	CPA-W20-09-SMTRC	
10	18.0(0.709)	24.0(0.945)	CPA-W20-10-SMTRC	
11	20.0(0.787)	26.0(1.024)	CPA-W20-11-SMTRC	
12	22.0(0.866)	28.0(1.102)	CPA-W20-12-SMTRC	
13	24.0(0.945)	30.0(1.181)	CPA-W20-13-SMTRC	
14	26.0(1.024)	32.0(1.260)	CPA-W20-14-SMTRC	
15	28.0(1.102)	34.0(1.338)	CPA-W20-15-SMTRC	



DESCRIPTION(內容):  
**2.0mm Wire-to-Board Header**  
**SMT 180° Type, REEL, CAP(RoHS)**

PART NO:  
 (料 號) CPA-W20-XX-SMTRC

DWG NO(圖號): 2001PA-XX-ST-S-C-R

DRAWN(製圖):  
**GONG**

CHECKED(確認):  
**TERESA**

APPROVAL(核准):  
**JOHNNY**

GENERAL TOLERANCE:  
 (公差)

X.XX ±0.20  
 X.X ±0.25

SCALE(比例):  
**FREE**

REV	DESCRIPTION	DATE
<b>R4</b>	新增接地片&PIN針平整度	<b>2013.10.15</b>
<b>R1</b>	減少13-15PIN	<b>2013.12.04</b>
<b>R2</b>	2014年8月料號P數編碼統一兩碼	<b>2018.08.09</b>
<b>R3</b>	圖面更新	<b>2020.01.11</b>

A

B

C

D

E

(7 to 9 circuits)

(10 to 15 circuits)

Specifications

Current Rating: 3A AC/DC (Max)AWG#22

Voltage Rating: 250V AC/DC

Temperature Range: -25°C ~ + 85°C

Contact Resistance: 20mΩ Max

Insulation Resistance: 1000MΩ Min

Withstanding Voltage:800V AC/Minute

Pin : Brass/ Tin-plated

Wafer Material: Nylon 6T,UL94V-0,natural

Solder tab:Brass/Tin-plated

Circuit No.1

Circuit No.1

8.9  
1.4 5.7

1

1

0.5

0.5

2

2

3

3

5.0 1.8 3.7 2.9 1.0 A±0.1 2.0 1.45

RECOMMENDED P.C. BOARD LAYOUT DIMM.

5.0 1.8 3.7 2.9 1.0 A±0.1 2.0 1.45

RECOMMENDED P.C. BOARD LAYOUT DIMM.

Poles	Dimension mm (in.)		Part No.	Note.
	A	B		
02	2.0(0.079)	8.0(0.315)	CPA-W20-02-SMTRC	
03	4.0(0.157)	10.0(0.394)	CPA-W20-03-SMTRC	
04	6.0(0.236)	12.0(0.472)	CPA-W20-04-SMTRC	
05	8.0(0.315)	14.0(0.551)	CPA-W20-05-SMTRC	
06	10.0(0.394)	16.0(0.630)	CPA-W20-06-SMTRC	
07	12.0(0.472)	18.0(0.709)	CPA-W20-07-SMTRC	
08	14.0(0.551)	20.0(0.787)	CPA-W20-08-SMTRC	
09	16.0(0.630)	22.0(0.866)	CPA-W20-09-SMTRC	
10	18.0(0.709)	24.0(0.945)	CPA-W20-10-SMTRC	
11	20.0(0.787)	26.0(1.024)	CPA-W20-11-SMTRC	
12	22.0(0.866)	28.0(1.102)	CPA-W20-12-SMTRC	
13	24.0(0.945)	30.0(1.181)	CPA-W20-13-SMTRC	
14	26.0(1.024)	32.0(1.260)	CPA-W20-14-SMTRC	
15	28.0(1.102)	34.0(1.338)	CPA-W20-15-SMTRC	

承洧科技股份有限公司  
Cherng Weei Technology Corp.

DESCRIPTION(內容):  
2.0mm Wire-to-Board Header  
SMT 180° Type, REEL, CAP(RoHS)

PART NO:  
(料號) CPA-W20-XX-SMTRC  
DWG NO(圖號): 2001PA-XX-ST-S-C-R

DRAWN(製圖):  
GONG  
CHECKED(確認):  
TERESA  
APPROVAL(核准):  
JOHNNY

GENERAL TOLERANCE:  
(公差)  
X.XX ±0.20  
X.X ±0.25  
SCALE(比例):  
FREE

REV:  
R4  
UNIT:  
mm  
SIZE:  
A4  
SHEET:  
2/3

REV	DESCRIPTION	DATE
R1	新增接地片&PIN針平整度	2013.10.15
R2	減少13-15PIN	2013.12.04
R3	2014年8月料號P數編碼統一兩碼	2018.08.09
R4	圖面更新	2020.01.11

A

B

C

D

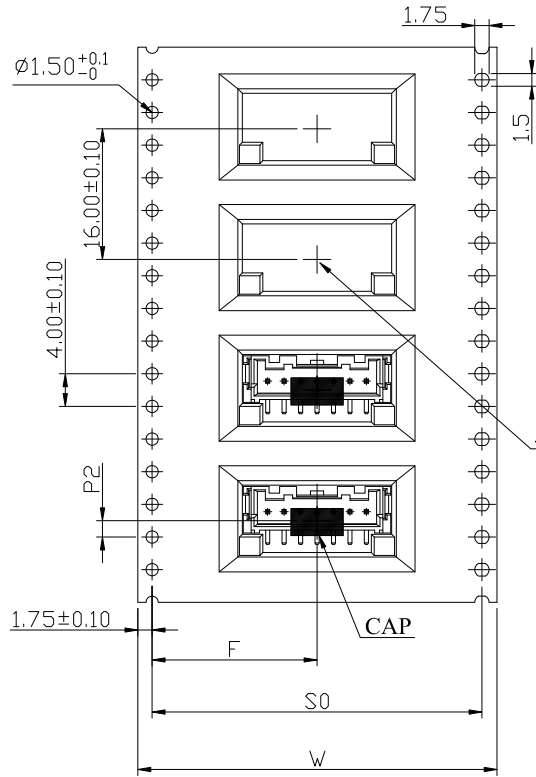
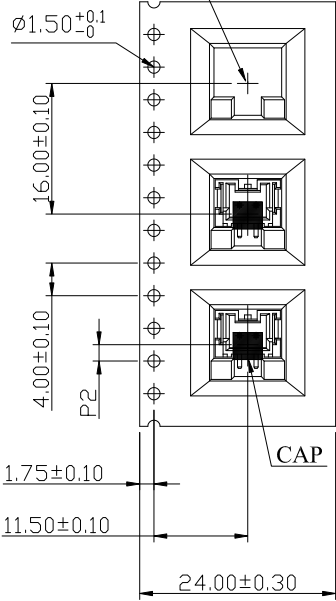
E

CF091

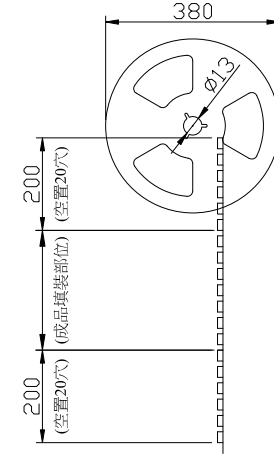
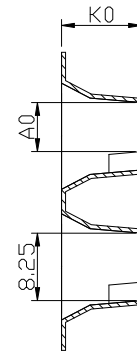
(02 circuits)

(03 to 12 circuits)

此為A0之中心向左偏1.35mm

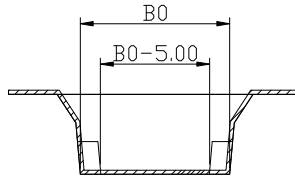


此為A0之中心向左偏1.35mm



工程課  
109.02.11  
確認

PIN	W±0.30	F	P2	S0	A0±0.10	B0±0.10	K0±0.10
02	24	11.50±0.10	2.00±0.10		6.0	8.30	9.9
03	32	14.20±0.10	2.00±0.10	28.40±0.10	6.0	10.30	9.9
04	32	14.20±0.10	2.00±0.10	28.40±0.10	6.0	12.30	9.9
05	32	14.20±0.10	2.00±0.10	28.40±0.10	6.0	14.30	9.9
06	44	20.20±0.15	2.00±0.10	40.40±0.10	6.0	16.30	9.9
07	44	20.20±0.15	2.00±0.10	40.40±0.10	6.0	18.30	9.9
08	44	20.20±0.15	2.00±0.15	40.40±0.10	6.0	20.30	9.9
09	44	20.20±0.15	2.00±0.15	40.40±0.10	6.0	22.30	9.9
10	44	20.20±0.15	2.00±0.15	40.40±0.10	6.0	24.30	9.9
11	44	20.20±0.15	2.00±0.15	40.40±0.10	6.0	26.30	9.9
12	56	26.20±0.15	2.00±0.15	52.40±0.10	6.0	28.30	9.9
13	56	26.20±0.15	2.00±0.15	52.40±0.10	6.0	30.30	9.9
14	56	26.20±0.15	2.00±0.15	52.40±0.10	6.0	32.30	9.9
15	56	26.20±0.15	2.00±0.15	52.40±0.10	6.0	34.30	9.9



 承洧科技股份有限公司  
Cherg Weei Technology Corp.

DESCRIPTION(內容):  
**2.0mm Wire-to-Board Header**  
SMT 180° Type, REEL, CAP(RoHS)  
PART NO:  
(料號) CPA-W20-XX-SMTRC  
DWG NO(圖號): 2001PA-XX-ST-S-C-R

DRAWN(製圖):  
GONG  
CHECKED(確認):  
TERESA  
APPROVAL(核准):  
JOHNNY

GENERAL TOLERANCE:  
(公差)  
.XX ±0.15  
.X ±0.25  
SCALE(比例):  
FREE

REV:  
R2  
UNIT:  
mm  
SIZE:  
A4  
SHEET:  
3/3

REV  
R0  
R1  
R2  
R3

DESCRIPTION  
RELEASE  
2014年8月料號P數編碼統一兩碼  
增加PIN數13-15PIN

DATE  
2012.11.28  
2018.08.09  
2020.02.11