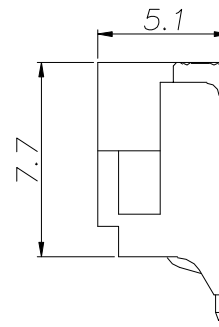
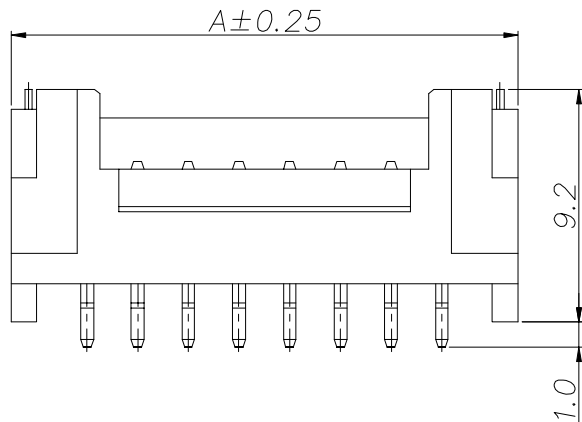


Material:  
 Insulator: Thermal Plasticity Resin(Halogen-Free)  
 UL 94V-0 (Milky Yellow)  
 Contact Post: □ 0.50mm Brass. Matte Tin-plated  
 Solder Tab: 0.30mm, Brass. Matte Tin-plated



Dimensional Information:

Circuits	Dimensions			PCS/Reel
	A	B	C	
2	8.0	4.75	2.0	500
3	10.0	6.75	4.0	500
4	12.0	8.75	6.0	500
5	14.0	10.75	8.0	500
6	16.0	12.75	10.0	500
7	18.0	14.75	12.0	500
8	20.0	16.75	14.0	500
9	22.0	18.75	16.0	500
10	24.0	20.75	18.0	500
11	26.0	22.75	20.0	500
12	28.0	24.75	22.0	500
13	30.0	26.75	24.0	500
14	32.0	28.75	26.0	500
15	34.0	30.75	28.0	500



DESCRIPTION(內容):  
**WF YH2.0 90° SMT (RoHS)**

PART NO:  
 (料號) **CYH-W20R-XX-HF-SMTR**  
 DWG NO(圖號): **A2008WR0-NPS**

DRAWN(製圖):  
**ZHANG**  
 CHECKED(確認):  
**TERESA**  
 APPROVAL(核准):  
**JOHNNY**

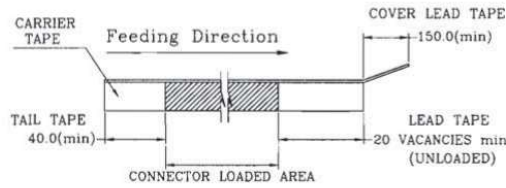
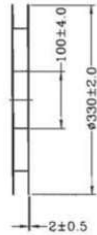
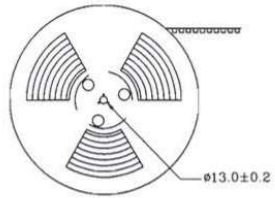
GENERAL TOLERANCE:(公差)  
 .XXX ±0.08  
 .XX ±0.15  
 .X ±0.25

SCALE(比例):  
**FREE**

REV:  
**R0**  
 UNIT:  
**mm**  
 SIZE:  
**A4**  
 SHEET:  
**1/2**

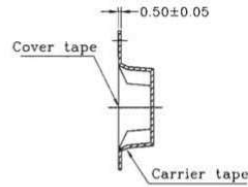
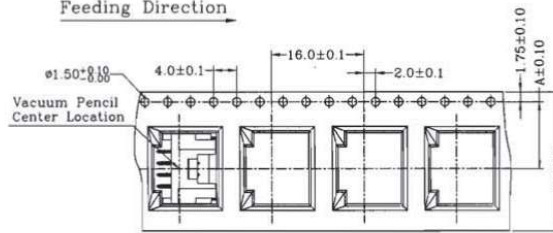
REV	DESCRIPTION	DATE
<b>R0</b>		<b>2022.05.18</b>
<b>R1</b>	<b>變更料號</b>	<b>2023.07.21</b>
<b>R2</b>		
<b>R3</b>		

Feeding Direction →



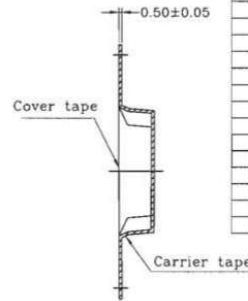
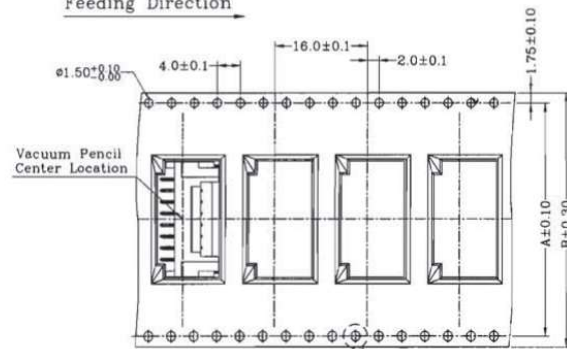
2 TO 5 CIRCUITS

Feeding Direction →

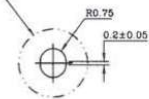


6 TO 15 CIRCUITS

Feeding Direction →



Circuits	Dimensions		Pcs/Reel
	A	B	
2	11.50	24.00	500
3	11.50	24.00	500
4	11.50	24.00	500
5	11.50	24.00	500
6	28.40	32.00	500
7	28.40	32.00	500
8	40.40	44.00	500
9	40.40	44.00	500
10	40.40	44.00	500
11	40.40	44.00	500
12	40.40	44.00	500
13	40.40	44.00	500
14	52.40	56.00	500
15	52.40	56.00	500



DESCRIPTION(內容):  
**WF YH2.0 90° SMT (RoHS)**  
 PART NO: (料號) **CYH-W20R-XX-HF-SMTR**  
 DWG NO(圖號): **A2008WR0-NPS**

DRAWN(製圖):  
**ZHANG**  
 CHECKED(確認):  
**TERESA**  
 APPROVAL(核准):  
**JOHNNY**

GENERAL TOLERANCE:(公差)  
 .XXX ±0.08  
 .XX ±0.15  
 .X ±0.25  
 SCALE(比例):  
 FREE

REV:  
 R0  
 UNIT:  
**mm**  
 SIZE:  
**A4**  
 SHEET:  
 2/2

REV	DESCRIPTION	DATE
<b>R0</b>		<b>2023.07.21</b>
<b>R1</b>		
<b>R2</b>		
<b>R3</b>		