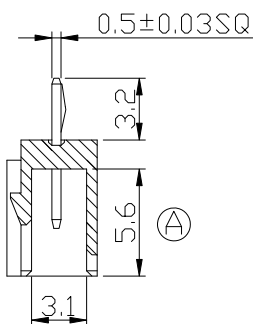
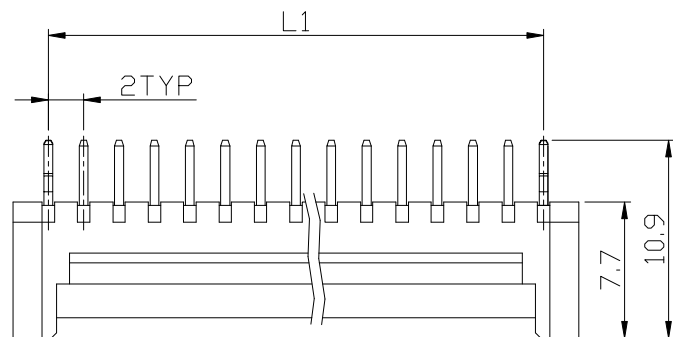


Applicable PCB Thickness
1.2~1.6mm



A-A Section

NOTES

Material : PA66 UL94V-0
Color : White/Red/Yellow
PIN Material : Brass
Finish : Tin plated



Poles	Dimension		Q' ty/bag
	L1	L	
02	2.00	5.98	1000 PCS
03	4.00	7.98	1000 PCS
04	6.00	9.98	1000 PCS
05	8.00	11.98	1000 PCS
06	10.00	13.98	1000 PCS
07	12.00	15.98	1000 PCS
08	14.00	17.98	1000 PCS
09	16.00	19.98	1000 PCS
10	18.00	21.98	1000 PCS
11	20.00	23.98	500 PCS
12	22.00	25.98	500 PCS
13	24.00	27.98	500 PCS
14	26.00	29.98	500 PCS
15	28.00	31.98	500 PCS

PART NO.	COLOR
CYH-W20-XX	WHITE
CYH-W20-XXR	RED
CYH-W20-XXY	YELLOW



DESCRIPTION(內容):
仿YH2.0mm 180° Wafer
(白.紅.黃)(RoHS)

PART NO:
(料號) CYH-W20-XX X
DWG NO(圖號): MX-I20004

DRAWN(製圖):
mandy
CHECKED(確認):
MANDY
APPROVAL(核准):
JOHNNY

GENERAL TOLERANCE:
(公差)
±0.3
SCALE(比例):
FREE

REV: R3
UNIT: mm
SIZE: A4
SHEET: 1/1

REV	DESCRIPTION	DATE
R0	RELEASE	2007.08.27
R1	變更: ②尺寸(原6.0), 自然替換, 第1Pin與最後1Pin打K	2011.08.26
R2	修正LAYOUT PITCH尺寸(原:5.59)	2014.06.04
R3	新增: 紅色(R)、黃色(Y) 系列產品	2014.07.09