

A B C D E

SPECIFICATIONS

Current Rating : 9A AC,DC

Voltage Rating : 600V AC,DC

Temperature Range : -25°C ~ +85°C

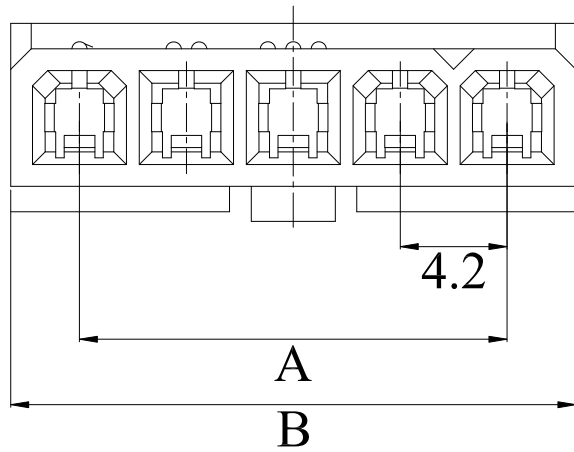
Contact Resistance : 10mΩ Max

Insulation Resistance : 1000MΩ Min

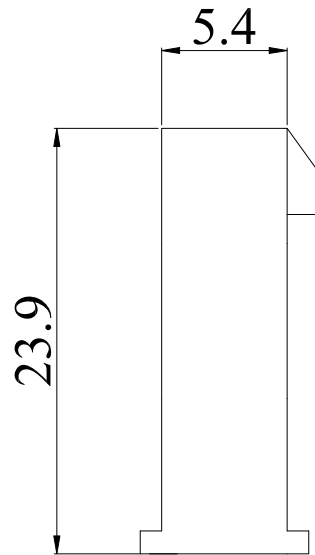
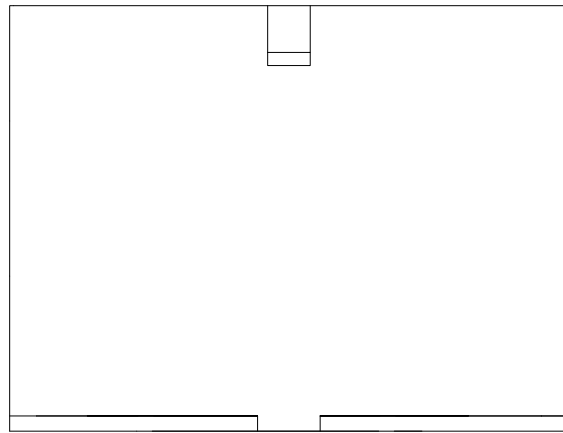
Withstanding Voltage : 1500V AC/minute

Material : Nylon 66,UL94V-2

1



2



1

2

POLES	PART NO.	A	B
02	CR-H423F-1X02	4.2	9.7
03	CR-H423F-1X03	8.4	13.9
04	CR-H423F-1X04	12.6	18.1
05	CR-H423F-1X05	16.8	22.3
06	CR-H423F-1X06	21.0	26.5

3

3



DESCRIPTION(內容):
Mini Fit 4.2mm (Female) Housing
Single Row Without Ears
(RoHS)

PART NO:
(料號) CR-H423F-1xXX

DWG NO(圖號): 4202-H-1xXF

DRAWN(製圖):
HUANG

CHECKED(確認):
TERESA

APPROVAL(核准):
JOHNNY

GENERAL TOLERANCE:
(公差)

X.X ±0.35
X.XX ±0.20

SCALE(比例):
FREE



REV:
R0

UNIT:
mm

SIZE:
A4
SHEET:
1/1

REV

R0

R1

R2
R3

DESCRIPTION

DATE

2019.05.08

A B C D E